

# Three-storey apartment building

Rapperswil, CH



## Project details

Client	Christa Gebert
Architecture	AERO Architekten ETH SIA GmbH
Project type	Residential construction apartment building
Construction type	Wood element construction
Services	Timber construction
Construction	2015
Locality	Rapperswil
Country	Switzerland

## Marriage of wood and concrete

The three-storey apartment building on Lake Zurich comprises three rental apartments finished to a high development standard. The construction is dominated by wood and concrete. Wood plays a crucial role here, and also performs the load-bearing functions. Five pairs of V-shaped braces create a framework in the centre of the building that supports all interior loads. The statics and structure remain visible. The wall and roof cladding comprise knotless, A-grade three-layer panels and lend the space a sense of warmth and texture. The facade consists of a purely vertical, pre-aged, full-surface groove and ridge formwork with fluted cover strips.

## Specific Contact



**Marco Gemperle**

Sales Residential Construction | Timber  
Construction | Switzerland

T +41 71 388 58 55

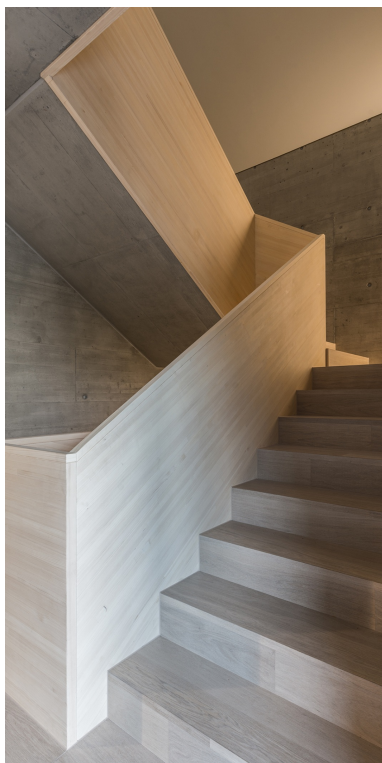
[marco.gemperle@blumer-lehmann.com](mailto:marco.gemperle@blumer-lehmann.com)

# Three-storey apartment building

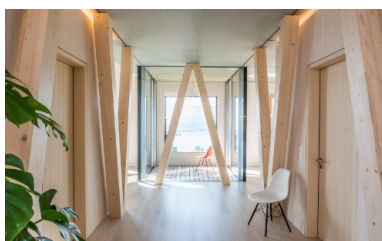
Rapperswil, CH



The pre-weathered timber facade defines the appearance of the exterior



Stair cladding and banisters in silver fir



Columns inside have a supporting function

Walls with three-ply cladding