

Hotel Söntispark extended with timber structure

Abtwil, CH



Hotel Säntispark extended with timber structure

Abtwil, CH



Project details

Client	HRS Real Estate AG
Architecture	Carlos Martinez Architekten AG
Project type	Hotels and restaurants
Construction type	Modular construction
Services	Timber construction
Own products	Fassaden
Construction	2013
Locality	Abtwil
Country	Switzerland

Hotel Säntispark extended with timber structure

Abtwil, CH



New timber structure for Hotel Säntispark – first ever five-storey!

Migros Ostschweiz expanded its Hotel Säntispark, adding a section with 66 guest rooms and seminar rooms. For reasons of sustainability, the builder opted for timber. Carlos Martínez Architekten designed the project with clean lines, warm materials and a pared-down colour concept. In aiming to keep the construction period short,

various elements and the sanitary areas were completely prefabricated. The result is one of the first five-storey hotel timber constructions in Switzerland. Two massive stairwells with lifts lead to the four floors with the guest rooms. The ceilings, floors and side walls are made of oak, while the south facade consists of Douglas fir slats.

Specific Contact



Richard Jussel

Project Development | Sales – Industrial
Buildings | Timber and Modular
Construction | Switzerland

T +41 71 388 58 61

richard.jussel@blumer-lehmann.com

Hotel Sántispark extended with timber structure

Abtwil, CH



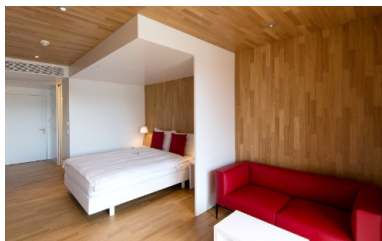
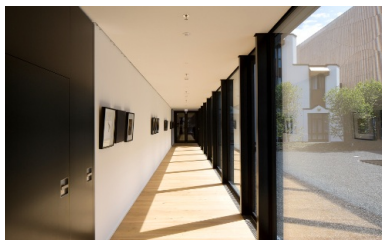
Facade design with vertical Douglas fir slats



Bathroom module design

Hotel Säntispark extended with timber structure

Abtwil, CH



Bright corridors around the atrium

Rooms with interior wood panelling