

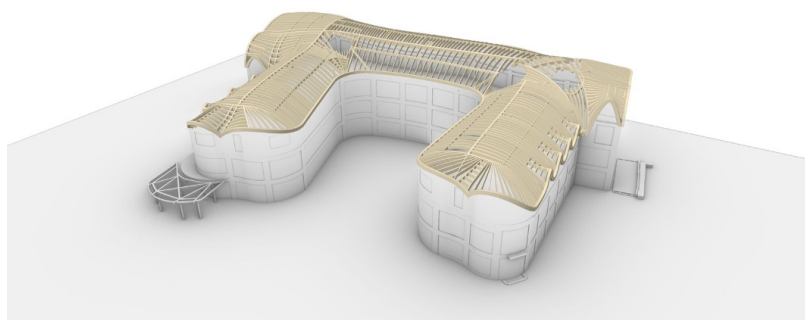
A new building for students at the New College campus

Oxford, UK



A new building for students at the New College campus

Oxford, UK



Project details

Client	New College Oxford
Architecture	David Kohn Architects
Project type	Education and research
Construction type	Free Form
Services	Timber construction
Locality	Oxford
Country	UK

A new building for students at the New College campus

Oxford, UK



A new building for students at the New College campus

New College in Oxford is expanding its campus with a new structure built according to designs by David Kohn Architects. Named after its core funder Chris Gradel, the 'Gradel Quadrangles' provide students with 99 rooms, a learning centre and a subterranean music hall. On behalf of the British general contractor Sir Robert McAlpine, Blumer Lehmann was responsible for the planning, production and assembly of the U-shaped Free Form roof for the main quad and New Warham House.

The general contractor took advantage of our Free Form timber construction expertise for the roof of the new building. Our planning team developed a bespoke timber construction solution involving a combination of different timber materials and techniques: rafters made from laminated veneer lumber (LVL) and curved edge beams from laminated timber. The roof is covered with OSB panels and tongue-and-groove formwork. The walls are crafted from prefabricated curved timber frame elements.

Right alongside the earlier New College in Oxford, the classic architecture of the Gradel Quadrangles with its square building and inner courtyards not only dovetails with the existing environment but also relates to the city and natural setting around it. A tower and gatehouse complete the building complex with their gently contoured stone facades.

Specific Contact



Daniel Bucher

Head of International Sales | Timber
Construction | Free Form

T +41 71 388 52 51

daniel.bucher@blumer-lehmann.com