

Extension of the east wing, Hotel Bad Horn

Horn, CH



Extension of the east wing, Hotel Bad Horn

Horn, CH



Project details

Client	Bad Horn AG
Architecture	Thomas Mauchle
Project type	Hotels and restaurants
Construction type	Modular construction
Services	General contractor services (GC)
Construction	2019-2020
Locality	Horn
Country	Switzerland

Extension of the east wing, Hotel Bad Horn

Horn, CH



Room modules as guest rooms

Conversions entail a loss in income for hotel owners. To keep the construction period for the new east wing as short as possible, Hotel Bad Horn AG opted for an extension with 42 guest rooms in a timber modular construction.

The spacious hotel rooms and suites in the east wing satisfy modern comfort standards. The ground floor features a lobby with a bar and a new restaurant. What makes the guest rooms special is their construction method. 29 room modules were produced at our plant. The prefabrication of some of the special rooms and suites was handed over to our partner Krattinger Holzbau from Amriswil. All the room and suite modules were fully fitted out during production: flooring and tiling, heating, interior finishing and even balconies. This left only a few fittings and furnishings to be assembled on site. Even the dimensions of the modules are extraordinary. Measuring 5.3m wide, 9 m long and 3 m high, they are some of the widest modules we have ever produced. Their over-sized dimensions meant they needed specialised transport to the construction site.

Specific Contact



Lukas Osterwalder

Division Manager Timber and Modular
Construction | DE | AT | LU
Member of the Executive Board

T +41 71 388 58 20

lukas.osterwalder@blumer-lehmann.com

Extension of the east wing, Hotel Bad Horn

Horn, CH



The hotel rooms in the newly converted east wing offer a spacious living area and plenty of comfort.



The wet rooms for the room modules were fully fitted out in our factory.

Extension of the east wing, Hotel Bad Horn



Horn, CH



The tastefully furnished lobby bar in the new east wing at Hotel Bad Horn.

The Wave restaurant in the extended wing of the hotel offers guests a fine dining experience.



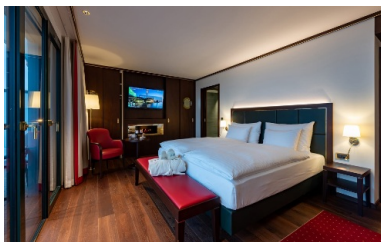
The new hotel rooms are made from prefabricated timber modules. The flooring and tiling, heating, interior finishing and even the balcony were pre-fitted at our factory.

Extension of the east wing, Hotel Bad Horn

Horn, CH



The red accents extend throughout the entire hotel extension.



A total of 42 spacious and comfortable guest rooms have been created in the new east wing at Hotel Bad Horn.