

Apartment buildings near St. Moritz

Champfèr, CH



Project details

Client	Private
Architecture	Diener & Diener Architekten AG , HTS Architekten + Partner AG
Project type	Residential construction apartment building
Construction type	Wood element construction
Services	Timber construction
Construction	2007
Locality	Champfèr
Country	Switzerland

System construction enables rapid completion

The challenge was to deliver two apartment buildings with high standards in terms of room acoustics and sound insulation based on a cost-efficient construction. Our solution comprised a timber system construction with a high degree of prefabrication. Following a construction period of just four months, we delivered a modern residential development in a fantastic location in the mountains with a very special facade. We took a leading role in the project in collaboration with partners from the Engadin region on the order of Basel-based architecture firm Diener & Diener.

Specific Contact



Marco Gemperle

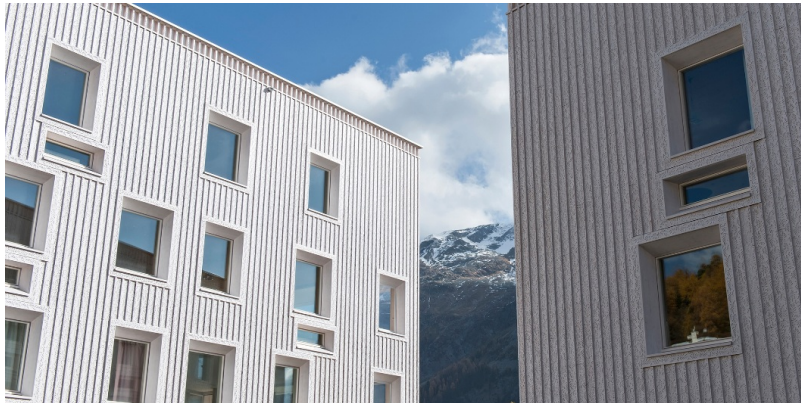
Sales Residential Construction | Timber
Construction | Switzerland

T +41 71 388 58 55

marco.gemperle@blumer-lehmann.com

Apartment buildings near St. Moritz

Champfèr, CH



Clear contours



Ornamentation on the facade is also visible inside



Close-up of the facade with milled ornamentation

Rustic interior in larch