

Apartment building in the Rhine Valley

Azmoos, CH



Apartment building in the Rhine Valley

Azmoos, CH



Project details

Client	Private
Architecture	Sven D Meller
Project type	Residential construction apartement building
Construction type	Wood element construction
Services	Timber construction
Construction	2018
Locality	Azmoos
Country	Switzerland

Apartment building in the Rhine Valley

Azmoos, CH



A residential building steeped in family tradition

After eight and a half months of construction, a three-storey apartment building housing five apartments was built on the site of a former barn. Not only does this provide a new home for the client and his parents, there's also space to rent out in the additional apartments.

The newly constructed apartment building contains two 4.5-room apartments, two 2.5-room apartments, a studio, eight basements and a garage. Above the concrete basement level, there are two full floors and the attic, spanning a total surface area of 900 m². Composite timber and concrete elements were used for the ceilings.

The apartment building is designed as a high-quality structure incorporating timber frames and 300 mm of external insulation. 200 m³ of local timber was used in the apartment building: spruce for the supporting structures and fir (laid vertically) in the facade. In keeping with the sustainable construction method, the client opted for a solar installation in combination with a heat pump with a geothermal probe to meet the building's energy needs.

Specific Contact



Marco Gemperle

Sales Residential Construction | Timber
Construction | Switzerland

T +41 71 388 58 55

marco.gemperle@blumer-lehmann.com

Apartment building in the Rhine Valley

Azmoos, CH



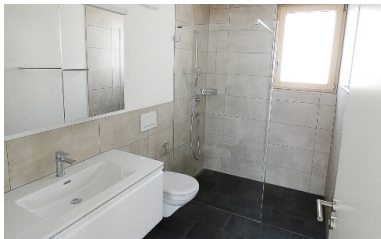
The newly constructed apartment building with a spruce facade houses four apartments and one studio.



A generously sized balcony area with a magnificent view of vines and mountains.

Apartment building in the Rhine Valley

Azmoos, CH



Timber sets standards both inside and out – here, for example, it is used as flooring and decking.

The bathroom – designed with a discreet colour scheme.



Timber defines the interior's character with panelling, ceiling beams and parquet flooring.